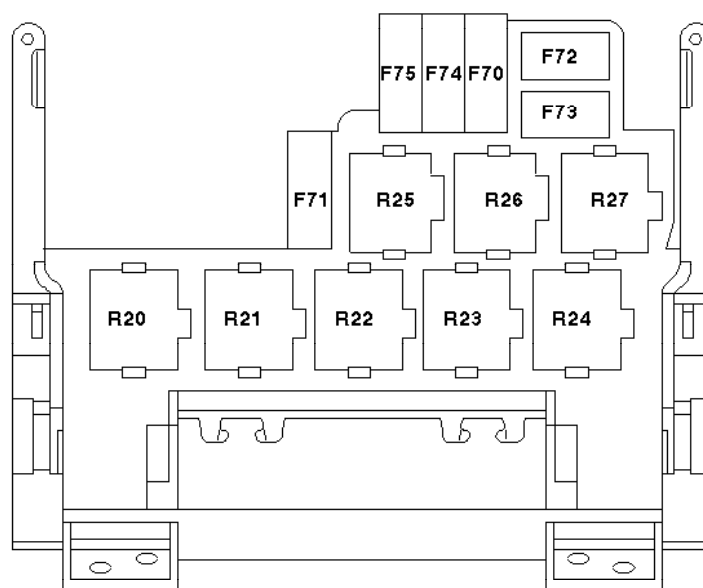


Number	Code	Description	Note
R1	A148	Power mirror fold module	2,0i DOHC manual transmission, heating with second heat exchanger
R1	A148	Power mirror fold module	as of 05/98 1,9 TDI
R2	A148	Power mirror fold module	2,0i DOHC manual transmission, heating with second heat exchanger
R2	A148	Power mirror fold module	as of 05/98 1,9 TDI
R3	K152	Invert relay	2,0i DOHC manual transmission, heating with second heat exchanger
R3	K193	Radio/telephone relay	2,8i CD-V6 without navigation system, 1,9 TDI without navigation system
R4	K155	Full throttle relay	before 08/98 2,8i CD-V6 with air conditioning and automatic transmission
R4	K124	A/C Cooling fan relay	before 08/98 2,8i CD-V6 with ATC module except Japan
R4	K124	A/C Cooling fan relay	2,0i/2,3i DOHC before 08/98
R4	K124	A/C Cooling fan relay	1,9 TDI with ATC module before 08/98
R4	K57	High speed condensor fan relay	2,0i DOHC, manual transmission and heater with second heat exchanger before 08/98
R4	H13	Seat belt warning buzzer	2,8i CD-V6, 2,0i/2,3i DOHC 1,9 TDI as of 09/98
R5	K151	Engine cooling fan run-on relay	2,0i DOHC manual transmission, heating with second heat exchanger
R5	K198	Power supply relay, Diesel	1,9 TDI as of 09/98
R6	K71	Automatic transmission relay	2,0i DOHC manual transmission, heating with second heat exchanger
R7	K205	Second speed blower motor relay	before 04/98
R7	K228	Crash fuel shutoff relay	as of 05/98 1,9 TDI with air bag, from 04/98 to 10/98 2,8i CD-V6 with air bag
R7	P1	Busbar	as of 05/98 1,9 TDI with air bag, ( as of 09/98 without glow plug heater )
R7	P1	Busbar	from 04/98 to 10/98 2,8i CD-V6 without air bag
R8	K34	Headlamp cleaning relay	2,0i DOHC manual transmission, heating with second heat exchanger
R9	K5	Daytime running lamps relay (DTRL)	2,0i DOHC manual transmission, heating with second heat exchanger
R9	K124	A/C Cooling fan relay	before 08/98 2,8i CD-V6 with ATC module Japan
R9	K124	A/C Cooling fan relay	from 04/98 to 08/98 2,0i/2,3i DOHC with ATC module Japan



Number	Code	Description	Note
R10a	K182	Double-tone horn relay	2,0i DOHC manual transmission, heating with second heat exchanger
R10b	K189	Second heat exchanger cut-out relay	2,0i DOHC manual transmission, heating with second heat exchanger
R11a	K32	A/C Wide Open Throttle (WOT) relay	2,0i DOHC manual transmission, heating with second heat exchanger
R11b	K57	High speed condensor fan relay	2,0i DOHC, Air conditioning
R11b	K155	Full throttle relay	2,3i DOHC, with air conditioning and automatic transmission as of 11/98
R12	K107	A/C Clutch relay	2,8i CD-V6, before 10/98 2,0i/2,3i DOHC
R12	K107	A/C Clutch relay	81 kW TDI with air conditioning or ATC module as of 09/98
R12	K107	A/C Clutch relay	66 kW TDI with ATC front and rear as of 09/98
R13	V24	Inhibit diode	2,0i DOHC manual transmission, heating with second heat exchanger
R13	V24	Inhibit diode	before 10/98 1,9 TDI
R13	V24	Inhibit diode	81 kW TDI with air conditioning or ATC module as of 11/98
R13	V24	Inhibit diode	66 kW TDI with ATC front and rear as of 11/98
R13	K58	Low speed condensor fan relay	2,0i DOHC, manual transmission and heater with second heat exchanger
R13	K58	Low speed condensor fan relay	2,3i DOHC, with air conditioning or ATC module
R14	K191	Crypto-transponder	2,0i DOHC manual transmission, heating with second heat exchanger
R15	K202	Independent heating fan relay	before 04/98
R15	K205	Second speed blower motor relay	as of 05/98
R16	K197	Quarterlight relay	2,0i DOHC manual transmission, heating with second heat exchanger
R17a	K204	Independent heating control relay	2,0i DOHC manual transmission, heating with second heat exchanger
R17b	K201	Independent heating cut-out relay	2,0i DOHC manual transmission, heating with second heat exchanger
R18a	K155	Full throttle relay	1,9 TDI Air conditioning
R18a	K58	Low speed condensor fan relay	2,3i DOHC automatic transmission
R18b	K57	High speed condensor fan relay	2,3i DOHC, Air conditioning, automatic transmission
R18b	K151	Engine cooling fan run-on relay	2,0i DOHC manual transmission, heating with second heat exchanger
R19	K57	High speed condensor fan relay	2,0i DOHC manual transmission and heater with second heat exchanger as of 09/98
R19	K124	A/C Cooling fan relay	with ATC module as of 09/98
R19	K155	Full throttle relay	2,8i CD-V6 as of 09/98
R19	K198	Power supply relay, Diesel	1,9 TDI before 08/98
R19	V24	Inhibit diode	2,0i/2,3i DOHC before 08/98
R19	V35	Water pump blocking diode	2,8i CD-V6 before 08/98





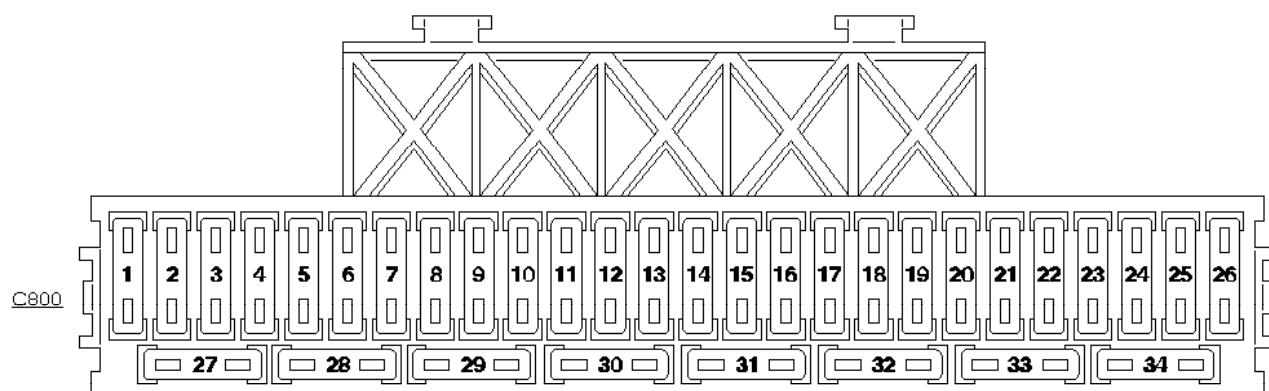
Number	Code	Description	Note
R20	K202	Independent heating fan relay	as of 05/98
R21	K162	Windshield wiper relay	before 10/98
R21	K4	Fuel pump relay	2,8i CD-V6, as of 05/99
R22	K123	Air pump relay	2,0i DOHC manual transmission, heating with second heat exchanger
R22	K167	Glow plug heater relay 2	2,0i DOHC manual transmission, heating with second heat exchanger
R22	V24	Inhibit diode	2,3i DOHC automatic transmission, air conditioning with ATC as of 09/98
R23	K164	Heated windshield relay	2,0i DOHC manual transmission, heating with second heat exchanger
R24	K4	Fuel pump relay	2,8i CD-V6 before 11/98, 2,0i/2,3i DOHC
R24	K4	Fuel pump relay	from 11/98 to 05/99 2,8i CD-V6
R24	K70	Pre-glow relay Diesel	Diesel engines
R25	K166	Glow plug heater relay 1	2,0i DOHC manual transmission, heating with second heat exchanger
R25	K206	Catalyst overheat relay	2,8i CD-V6 before 08/98
R25	V35	Water pump blocking diode	2,8i CD-V6 as of 09/98
R26	K149	Load reduction relay	2,0i DOHC manual transmission, heating with second heat exchanger
R27	K108	Power relay	2,0i DOHC manual transmission, heating with second heat exchanger
R27	K147	Decoupling relay	2,0i DOHC manual transmission, heating with second heat exchanger



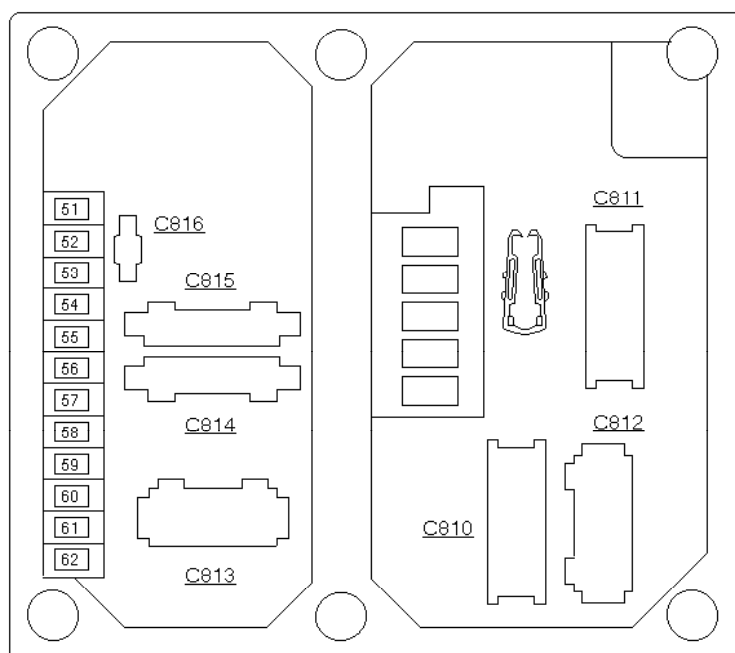
Code	Description	Note	Location
K 1	Rear window heater relay	Second heat exchanger cut-out relay	in Central Junction Box (CJB)
K 45	Engine cooling fan relay	2,0i DOHC, 2,3i DOHC, some models	engine compartment, front
K 96	Delayed interior light relay	Second heat exchanger cut-out relay	in Central Junction Box (CJB)
K 125	Rear fog lamp cutoff relay	with trailer socket	behind luggage compartment lining, driver side
K 126	Accessory delay relay	Second heat exchanger cut-out relay	in Central Junction Box (CJB)
K 148	Dipped/Main beam relay	Second heat exchanger cut-out relay	in Central Junction Box (CJB)
K 196	Auxiliary battery/independent heating cut-out relay	Independent heating with second battery	under RH front seat
K 199	Direction indicator relay, left	Second heat exchanger cut-out relay	in Central Junction Box (CJB)
K 200	Direction indicator relay, right	Second heat exchanger cut-out relay	in Central Junction Box (CJB)
K 203	Alarm horn relay	Second heat exchanger cut-out relay	in Central Junction Box (CJB)







Fuse panel of Central Junction Box (CJB)



#### Other fuses

Fuse number	Connector number	Location
F76	C914	under RH front seat
F77	C915	under RH front seat
F78	C973	under RH front seat



Group	Description	Fuse number																	
		1	2	3	4	5	6	7	8	9	10	11	12	13	14	15	16	17	18
		20A	10A	5A	10A	15A	10A	20A 25A*	30A	30A	30A	20A	15A	3A	*	30A	10A* 30A	10A 30A*	5A
12-01	ABS with Traction Control System (TCS)			●						●	●								
16-01	Four-Wheel Drive					●													
17-01	Automatic Transmission					●												●	
26-01	Starting System																		
29-01	Diagnostic System																		
29-02	Engine Control 2,8l CD-V6				●									●	●	●			●
29-03	Engine Control 1,9 TDI				●									●	●	●	●	●	
29-04	Engine Control 2,0l/2,3l DOHC													●	●		●		
29-05	Engine Control 1,9 TDI Unit Injector Engine				●										●	●			●
31-01	Charging System								●										
32-01	Headlamps																		
32-02	Daytime Running Lamps																		
32-03	Headlamp Levelling																		
32-04	Stop Lamps																		
32-05	Reversing Lamps					●													
32-06	Fog Lamps																		
32-07	Signal and Hazard Indicators																		
32-08	Parking Lamps/Licence Plate Lamps																		
32-09	Wiper/Washer Control								●				●						
32-10	Headlamp Washer											●							
32-11	Horns						●												
33-01	Entry Illumination																		
33-02	Courtesy Lamps			●															
33-03	Instrument Illumination	●	●	●															
33-04	Instrument Cluster		●																
33-05	Cigar Lighter/Clock			●				●					●						
33-06	Speed Control			●											●				
33-07	Anti-theft Alarm				●														
33-08	De-icing																		
33-09	Park Position System					●													
34-01	Heating/Ventilation			●											●			●	

F7 \*: as of 05/99

F14 \*: 10A: 1,9 TDI 20A: Petrol engines 25A: 1,9 TDI unit injector engine

F16 \*: 1,9 TDI unit injector engine

F17 \*: 66 kW  
With electric coolant heater

1	2	3	4	5	6	7	8	9	10	11	12	13	14	15	16	17	18
20A	10A	5A	10A	15A	10A	20A 25A*	30A	30A	30A	20A	15A	3A	*	30A	10A* 30A	10A 30A*	5A



Fuse number																Group
19	20	21	22	23	24	25	26	27	28	29	30	31	32	33	34	
5A	10A	25A 30A*	25A* 30A	10A	25A	3A	30A	25A	10A	5A	3A	15A	3A 10A*	25A 30A*	25A	
	●								●							12-01
																16-01
	●						●									17-01
							●									26-01
●																29-01
							●	●	●				●			29-02
									●				●			29-03
													●			29-04
	●												●			29-05
														●		31-01
																32-01
																32-02
																32-03
	●															32-04
																32-05
												●				32-06
																32-07
											●					32-08
									●	●				●		32-09
									●							32-10
																32-11
																33-01
																33-02
																33-03
●	●					●										33-04
																33-05
	●												●			33-06
●							●									33-07
								●		●						33-08
																33-09
					●					●					●	34-01
19	20	21	22	23	24	25	26	27	28	29	30	31	32	33	34	F21 *: from 03/98 to 08/98, as of 05/99 F22 *: from 03/98 to 08/98, as of 05/99 F32 *: 1,9 TDI unit injector engine F33 *: as of 05/99
5A	10A	25A 30A*	25A* 30A	10A	25A	3A	30A	25A	10A	5A	3A	15A	3A 10A*	25A 30A*	25A	

F21 \*: from 03/98 to 08/98, as of 05/99  
 F22 \*: from 03/98 to 08/98, as of 05/99  
 F32 \*: 1,9 TDI unit injector engine  
 F33 \*: as of 05/99



1	2	3	4	5	6	7	8	9	10	11	12	13	14	15	16	17	18
20A	10A	5A	10A	15A	10A	20A 25A*	30A	30A	30A	20A	15A	3A	*	30A	10A* 30A	10A 30A*	5A





[illegible]



Group	Description	Fuse number																	
		51	52	53	54	55	56	57	58	59	60	61	62	70	71	72	73	74	75
		20A	20A	10A	10A	5A	5A	5A	10A	10A	10A	10A	10A	30A	30A	40A	30A* 40A	60A	50A
12-01	ABS with Traction Control System (TCS)																		
16-01	Four-Wheel Drive																		
17-01	Automatic Transmission																		
26-01	Starting System																		
29-01	Diagnostic System																		
29-02	Engine Control 2,8l CD-V6													●		●	●		
29-03	Engine Control 1,9 TDI															●	●	●	●
29-04	Engine Control 2,0l/2,3l DOHC															●	●		
29-05	Engine Control 1,9 TDI Unit Injector Engine															●	●	●	
31-01	Charging System																		
32-01	Headlamps						●	●	●	●	●	●	●						
32-02	Daytime Running Lamps						●	●	●	●	●	●	●						
32-03	Headlamp Levelling								●	●	●								
32-04	Stop Lamps																		
32-05	Reversing Lamps																		
32-06	Fog Lamps																		
32-07	Signal and Hazard Indicators		●																
32-08	Parking Lamps/Licence Plate Lamps						●	●											
32-09	Wiper/Washer Control																		
32-10	Headlamp Washer																		
32-11	Horns																		
33-01	Entry Illumination			●		●													
33-02	Courtesy Lamps			●															
33-03	Instrument Illumination																		
33-04	Instrument Cluster					●	●	●		●	●								
33-05	Cigar Lighter/Clock																		
33-06	Speed Control																		
33-07	Anti-theft Alarm		●		●	●													
33-08	De-icing	●																	●
33-09	Park Position System																		
34-01	Heating/Ventilation																		●

F73\*: 2,0l DOHC, manual transmission, Heating

51	52	53	54	55	56	57	58	59	60	61	62	70	71	72	73	74	75
20A	20A	10A	10A	5A	5A	5A	10A	10A	10A	10A	10A	30A	30A	40A	30A* 40A	60A	50A



[illegible]



[illegible]





[illegible]

